

Information

Please read this thoroughly

Shin-Osaka Youth Hostel

<https://osaka-yha.or.jp/shin-osaka/>

1-13-13 10th floor, Higashi-Nakashima Osaka-city,
Higashi-Yodogawa-ku, Osaka, 533-0033, Japan

MAIL shin-osaka@osaka-yha.or.jp

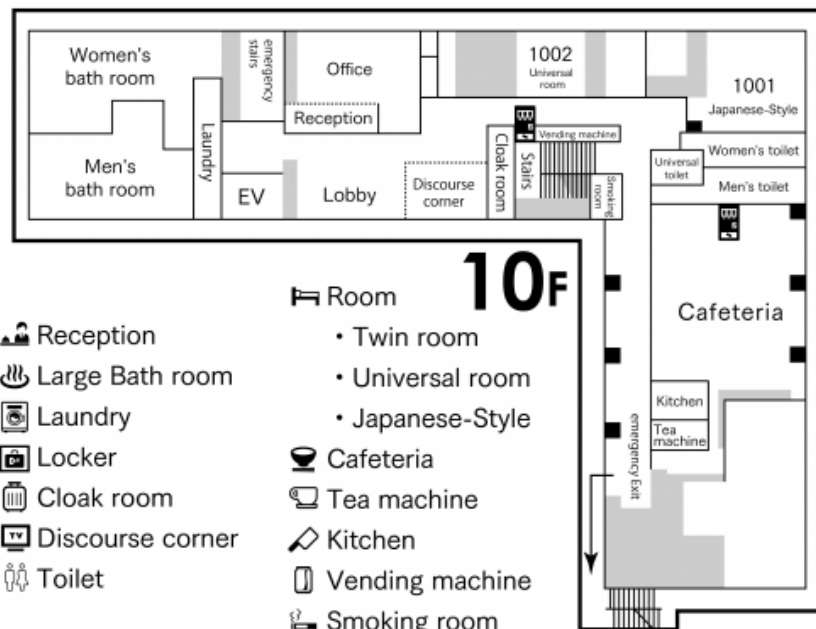
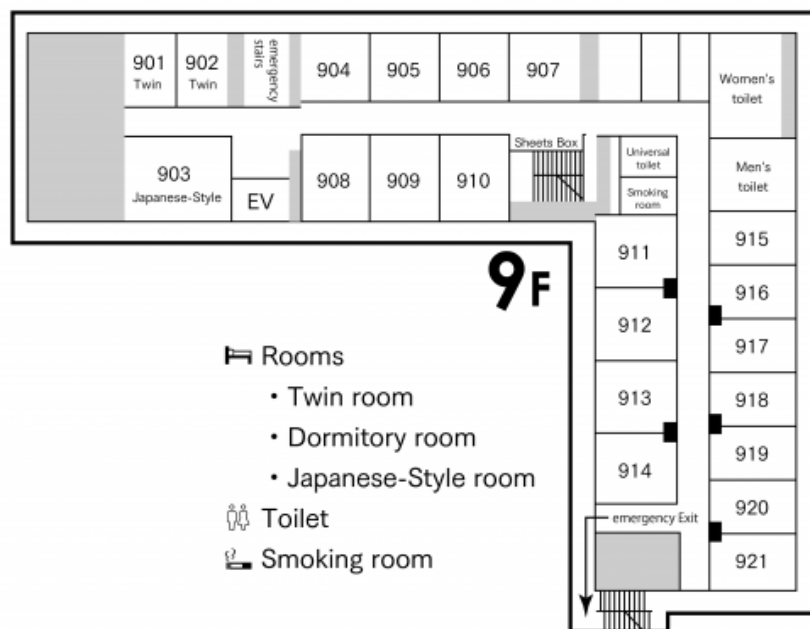


~In Staying at our Hostel~

Cautions and Guidance

- The dormitory room are gender separated. Please separate males and females when designating rooms. * This excludes family groups
 - Self-services are required. Bed making, serving meals, and other services are not available.
 - Eating and drinking are not allowed in the dormitory room. Please use the dining room to eat or drink.
 - Amenities, such as bath towels, face towels, toothbrush and more, are not included in the accommodation fee
 - Public Bath is equipped with shampoo, rinse, and body soap.
 - Please separate your garbage
-
- *Group reservations are accepted for groups of 10 or more people from the same month one year in advance. Please note that if there are fewer than 10 people on the day of your stay, the minimum 10-person rate will be charged.

~FloorGuide~



~Operating Hour and Amenities~

Operating Hours/ Schedule

Reception	6:00 ~ 24:00
Check-in	16:00 ~ 23:00
Check-out	5:45 ~ 10:00
Lights out	23:00
Gate close	24:00
Bath hours	16:00 ~ 24:00 06:00 ~ 09:00

Our Amenities

Bath towel (Rental)	100JPY
Face towel (Rental)	80JPY
Yukata (Rental)	300JPY
Toothbrush	80JPY
Detergent	50JPY

~Payment~

If you wish to Pre-Pay or Pay after, please contact us

Upon Depositing

Upon depositing, enter the name of sender as “Arrival Date + Name of your Group”
Example: If a group called “Shin-Osaka” are paying for the stay at August 13th, the name of the sender should look like “0813〇〇SHS”

Bank Name	MUFG Bank,Ltd. SHIN-OSAKA BRANCH 822 OSAKA JP
-----------	---

A/C No.	3642887
---------	---------

A/C name	OSAKA YOUTH HOSTEL ASSOCIATION / SHIN-OSAKA Youth Hostel
----------	--

SWIFT CODE	BOTKJPJT
------------	----------

～About Cancellation Fees～

In case of change in group size and cancellation, contact us as soon as possible.

***Cancellation made 6 days prior to your arrival result in cancellation fee for the meal on top of accommodation**

10%	30 – 15 days in advance
20%	14 – 7 days in advance
30%	6 – 2 days in advance
50%	Previous day
70%	Before same day 5 p.m.
100%	After same day 5 p.m.

~Document Submission~

Submit these documents prior to your stay

Guest List

List the name, Address, age , sex of each guests and Passport No.

Itinerary

List the time of check-in, check-out, dining and more

Allergies survey

Submit at least 20 days prior to your arrival

～About Our Meal Serving～

About Serving of Meal, Allergies

- Self-services are required.
- We require our guests to serve their meal. Therefore, please consider the time to serve when planning the time to eat.
- There might be other groups during your stay. When scheduling your meal, we might not be able to meet your demands

*In some cases we may not be able to meet some of your demands.

*We are unable to arrange alternate meal without submission.

避難経路

Evacuation Route



Shin-Osaka Youth Hostel

新大阪ユースホテル

※非常の際はスタッフの誘導に従い、速やかに避難してください。
Please take refuge immediately in a emergency.



非常口
Emergency Exit

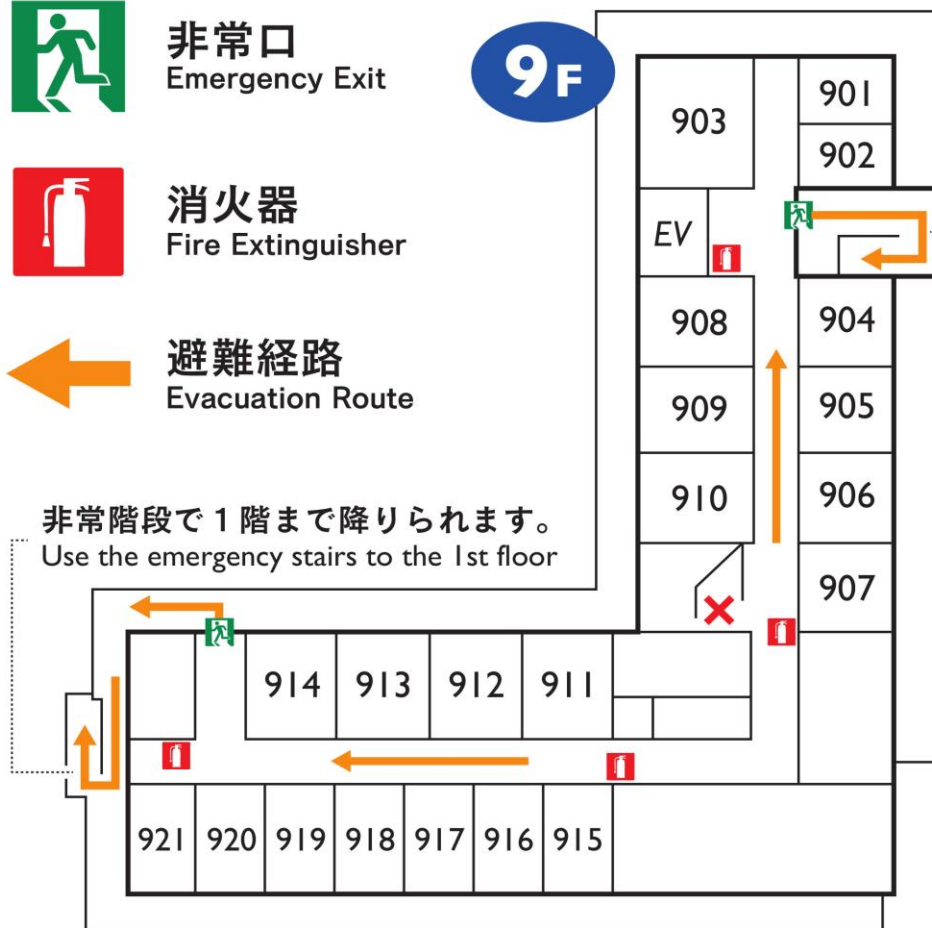


消火器
Fire Extinguisher

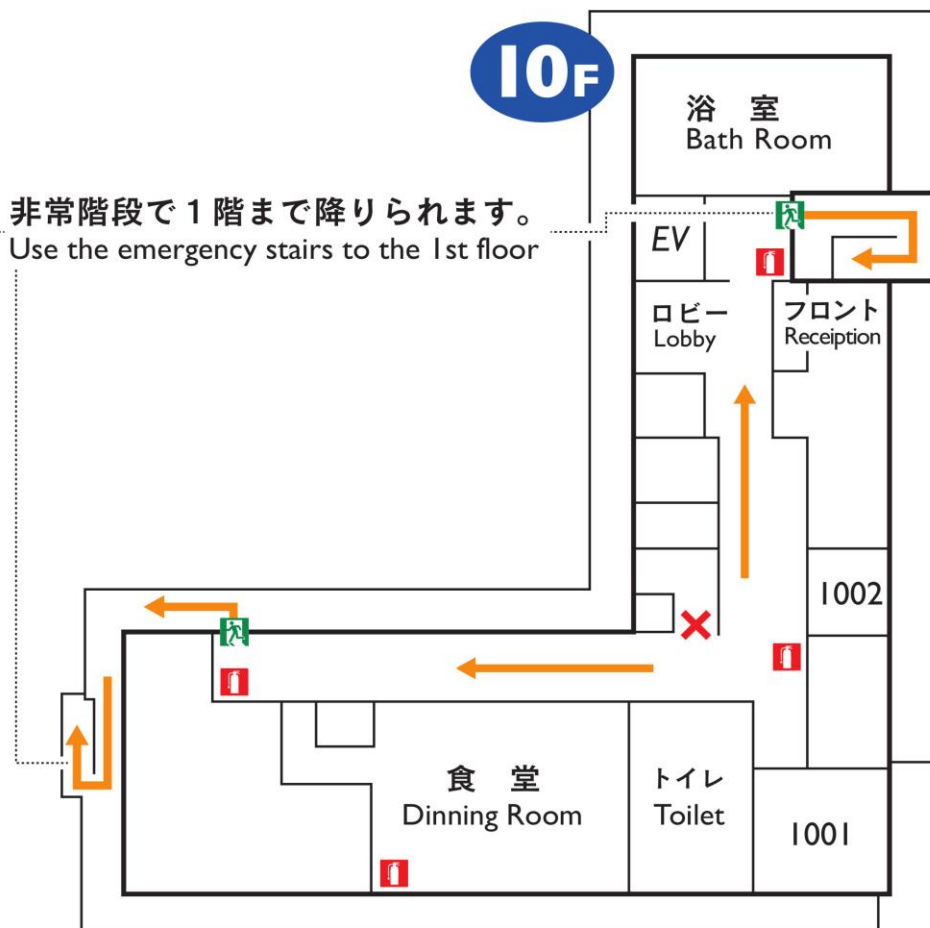


避難経路
Evacuation Route

非常階段で1階まで降りられます。
Use the emergency stairs to the 1st floor



非常階段で1階まで降りられます。
Use the emergency stairs to the 1st floor



<https://osaka-yha.or.jp/shin-osaka/>

Contact List

Shin-Osaka Youth Hostel

1-13-13 10th floor, Higashi-Nakashima Osaka-city,
Higashi-Yodogawa-ku, Osaka, 533-0033, Japan

TEL +816-6370-5427 MAIL shin-osaka@osaka-yha.or.jp